



TC Series Thermal Profiler

Model:

TC-40K II

TC-60K II

TC-80K II

Standard Composition:

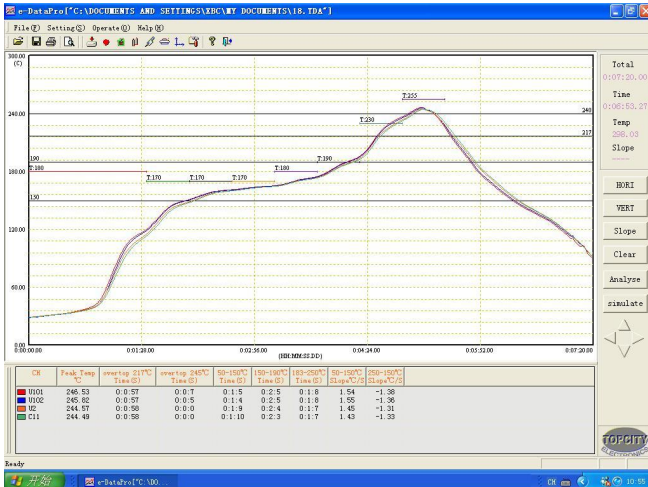
- | | |
|----------------------------|--------------------------|
| 1. Thermal profiler | 2. Insulation box |
| 3. Temperature test line | 4. Data download line |
| 5. Charger | 6. "+" screwdriver |
| 7. Software CD | 8. Hi-temp adhesive tape |
| 9. Tweezers | 10. Insulated gloves |
| 11. Hi-temp fine wire | 12. Scissors |
| 13. Instrument box | 14. User Manual |
| 15. Acceptance Certificate | |

Main Technical Specifications:

- 1、 Thermocouple: K-type thermocouple
- 2、 Sampling interval: 0.05sec---600sec Set with software
- 3、 Record data: 120000 point/channel, Can record 20 sets profile
- 4、 Resolution: 0.1℃
- 5、 Temperature measuring range: 0—400℃
- 6、 Temperature measuring accuracy: ±1.0℃
- 7、 Total power: ≤100mW
- 8、 Operating voltage: 3.6VDC, rechargeable battery
- 9、 Dimensions: 208(L) × 75(W) × 15(H)mm
208(L) × 75(W) × 19(H)mm
- 10、 Start Mode : Manual, specified time or specified temperature
- 11、 Record mode: Monitor/Record
- 12、 Connection mode: RS232/USB
- 13、 Software version: e-DataPro 1.5



TC Series Thermal Profiler Software Setup and data analysis



Software main screen

Customer: Topcity Product Name: TC2000

Channel	X (CM)	Y (CM)	Co...
<input checked="" type="checkbox"/> U101	4.1	9.3	
<input type="checkbox"/> c08	0.0	0.0	
<input checked="" type="checkbox"/> U102	11.4	5.6	
<input checked="" type="checkbox"/> U2	11.1	16.4	
<input checked="" type="checkbox"/> C11	6.6	14.1	
<input type="checkbox"/> CH 6	13.9	10.6	
<input type="checkbox"/> CH 7	0.0	0.0	
<input type="checkbox"/> CH 8	0.0	0.0	

PCB Size X(CM) 20 Y(CM) 20

Product information setup

Solder Type: 27000 Supplier: Kester

RAMP Start Temp: 50 °C

SOAK Temp Rate: 150 °C/min

REFLOW Max Temp: 235 °C

COOLDOWN slope: 2 °C/min

Solder information setup

Line: LIN-1 Manu: SUNEAST Model: N3000

Zone Lengths (CM): 1:100, 2:36, 3:36, 4:36, 5:36, 6:36, 7:36, 8:36

Zone Setpoints (°C): 1:180, 2:170, 3:170, 4:170, 5:180, 6:190, 7:230, 8:255

Speed: 65 CM/min

Machine parameter setup

Channel	RampSlop	Soak Time150-190	Reflow Time217	Peak Temp	CooldownSlop
U101	1.53	-47.5K	125.5	18.3%	57.0
U102	1.53	-46.5K	125.5	18.3%	57.5
U2	1.44	-56.3K	124.0	13.3%	58.0
C11	1.42	-58.2K	123.5	11.7%	58.0

Data analysis:

PWI

Peak Temp, Times of overtop the Temp

Times of between Temp (Reflow)

Slope of between Temp (Reflow)

Slope of between Times (Wave)

Horizontal line and Vertical line setting